

Rejistra Krestencyine
Awulsa Sokolla

Od daty 24 Junij 1837 do teyrie samey.

Daty 1838. Sporjadione.

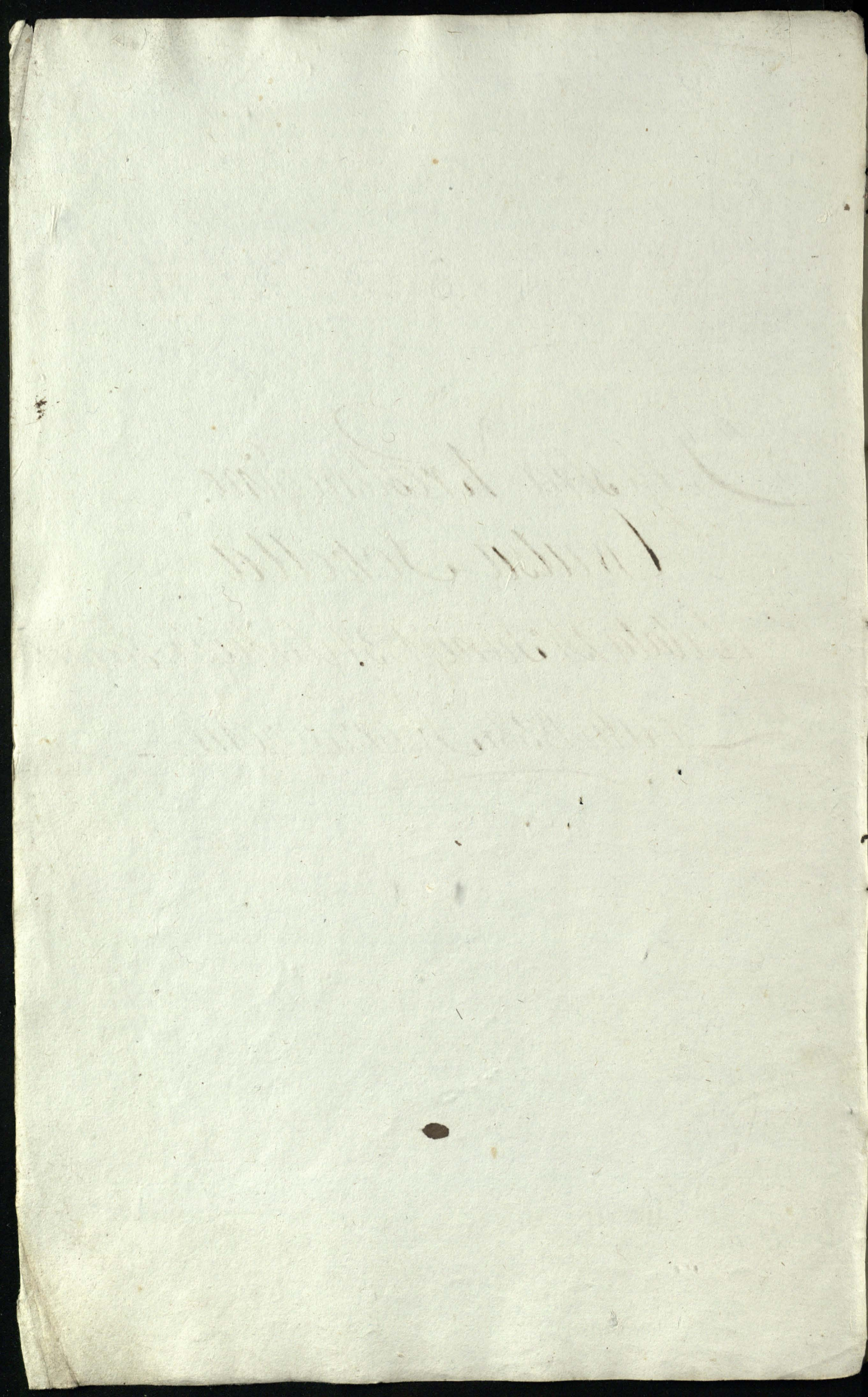


Tabela Wysiewu Różnego zboża oran y

| Data | | Kżyło | | Prenia | | Seczma | | Ories | | Jyka | | Paso | | | | |
|---------------|--------------------|-------|---------|--------|-------|---------|--------|-------|---------|------|-------|---------|-----|-------|---------|-----|
| | | Morgi | Wysiew | | Morgi | Wysiew | | Morgi | Wysiew | | Morgi | Wysiew | | Morgi | Wysiew | |
| | | | 10. 1/4 | gus | | 10. 1/4 | gus | | 10. 1/4 | gus | | 10. 1/4 | gus | | 10. 1/4 | gus |
| Wysiew | | | | | | | | | | | | | | | | |
| Augoda 17 | poriano | 12 | 3 | | | | | | | | | | | | | |
| 27 | poriano | 41 | 949 | | | | | | | | | | | | | |
| 31 | poriano | 32 | 69 | | | | | | | | | | | | | |
| | Egijunkiey | 21 | 5 | | | | | | | | | | | | | |
| | Ogull - - | 77 | 183 | | | | | | | | | | | | | |
| Apr 21 | Poriano | | | | | | | | | | | | | | | |
| 30 | Poriano | | | | | | | | | | | | | | | |
| Mai 5 | Poriano | | | | | | | | | | | | | | | |
| | Meyona Nr. 12 g/12 | | | | | | | | | | | | | | | |
| 11 | poriano | | | | | 1 | 26 1/2 | | | | | | | | | |
| 29 | Poriano | | | | | | | | | | 6 1/2 | 1 | | | | |
| | Mopuwiz Later | 77 | 183 | | | 1 | 26 1/2 | 51 | 237 | 9 | 6 1/2 | 1 | 12 | | | |

Wzrost w Australii Szwedzi w R. 1837/8. 2.

| Dzień | Miejsce | Gylo | | Pronu | | Lecum | | Onis | | Gygra | | Pesse | | |
|----------|-----------------|------------------|------------------|------------------|------------------|------------------|------------------|------------------|------------------|------------------|------------------|------------------|------------------|----|
| | | Wzrost 10 1/8 | Wzrost 10 1/8 | Wzrost 10 1/8 | Wzrost 10 1/8 | Wzrost 10 1/8 | Wzrost 10 1/8 | Wzrost 10 1/8 | Wzrost 10 1/8 | Wzrost 10 1/8 | Wzrost 10 1/8 | Wzrost 10 1/8 | Wzrost 10 1/8 | |
| | <u>Wzrostek</u> | | | | | | | | | | | | | |
| Julii 30 | Uzelo | 56 | 230 | | | | | | | | | | | |
| August 4 | Uzelo | 25 | 38 | | | | | | | | | | | |
| 28 | Uzelo Owsa | | | | | | | 31 | 140 | 30 | | | | |
| 31 | Uzelo | | | | | | | 27 | 104 | | | | | |
| Uzra 11 | Uzelo | | | | | | | 2 | 12 | 32 | 6 | 11 | 13 | |
| | O gatt | 81 | 268 | | | | | 2 | 70 | 28 | 6 | 30 | 11 | 13 |

| Data | | Kłosa no Srobia | | w kiamie | |
|--|--|-----------------------|-----|----------------------|----------------|
| Mis. | Die | Ro. | Sm. | Crystea | Postechna |
| | | | | Mi. / 15 / 4g. | Mi. / 15 / 4g. |
| <i>Wojtyła</i> <i>Wojtyła</i> <u><i>Wojtyła</i></u> <u><i>Crimego</i></u> | | | | <u><i>Namiar</i></u> | |
| Aug 10 | 2 Otrusow | | | 6 9 | - - 9 |
| 14 | 2 Mlocow | 25 | 30 | 6 5 | - - 1 - |
| 21 | 2 Mlocow | 18 | - | 5 3 | - 1 - |
| Wre 22 | 2 Mlocow sprandy | 4 | 28 | 11 3 | - 8 |
| glu 20 | 2 Mlocow | 21 | - | } po k: 55 to 5 | |
| 27 | 2 Mlocow | 34 | 45 | 13 3 | - 1 5 |
| Wre 4 | 2 Mlocow | 21 | 20 | 6 1 | - 1 - 9 |
| 11 | 2 Mlocow | 26 | 15 | } po k: 50 i 15 | |
| 24 | 2 Mlocow | 24 | - | 8 7 9 | 1 2 13 |
| 31 | 2 Mlocow | 8 | - | 2 2 5 | 1 10 |
| Jan 15 | 2 Mlocow | 17 | 44 | } <i>Namiar</i> | |
| 12 | 2 Mlocow | 42 | 15 | 14 1 9 | 1 4 16 |
| 29 | 2 Mlocow <i>prochalski</i> <i>Wojtyła</i> | 15 | 32 | 7 1 9 | 4 10 |
| Feb 3 | 2 Mlocow Ogatani | 26 | 8 | 66 2 8 | 66 2 |

| Data | | Kłosa | | w Ziarnie | | | |
|-------|----|-------|-----|-----------|----|----------|----|
| | | Snoju | | Czystem | | Postedem | |
| Mies: | Do | Prof | San | 15 | 15 | 15 | 15 |

Wymiot Peremicy

Samiar

Wymiot Sechmienia

Samiar

z Młocora

2

Nawione

2

19

| Datta | | Wymtot CNSA | Höhe w Snopie | | Namiar | w Niamni | | | |
|-------|---------|--------------------|---------------------|------|-------------|----------|-------|-----|--------|
| Misc: | Da | | Prop. | In: | | Crysten | Podan | 137 | 138 |
| | Alra 21 | Otruskaw | - | - | Namiar | 67 | - | 2 | - |
| | 22 | 2 Mlocowa sperandy | 4 | 36 | Namiar | 16 | - | 2 | 17 |
| | Sba 21 | 2 Mlocowa | 32 | - | Namiar | 10 | 4 | - | 16 |
| | Alra 5 | 2 Mlocowa | 40 | - | Namiar | 12 | 4 | - | 4 1/2 |
| | 13 | 2 Mlocowa | 39 | - | Namiar | 14 | 6 | - | 16 |
| | Alra 11 | 2 Mlocowa | 31 | 30 | Namiar | 10 | 3 | - | 3 1 |
| | 18 | 2 Mlocowa | 22 | 20 | Namiar | 6 | 2 | - | 23 9 |
| | 24 | 2 Mlocowa | 25 | 20 | Namiar | 6 | 4 | - | 14 9 |
| | 31 | 2 Mlocowa | 35 | - | Namiar | 10 | 6 | - | 3 - 10 |
| | Janus 8 | 2 Mlocowa | 45 | 24 | Namiar | 16 | 6 | - | 3 5 - |
| | | Ogall - | 27 | 6 30 | Ogall Nami. | 90 | 7 7 | 22 | - 9 |

5.

Ruchód Głowa Różnego z Amu w Szkoła w Wronzku Brzeskiego.

Ruchód

| Data | Miejsce | Wzrost | | | Ciężar | | | Ciepota | | | Ciężar | | | | | | | |
|------------|-----------------------|---------|---------|---------|---------|---------|---------|---------|---------|---------|---------|---------|---------|-----|---|----|---|-----|
| | | 13: 1/2 | 14: 1/2 | 15: 1/2 | 13: 1/2 | 14: 1/2 | 15: 1/2 | 13: 1/2 | 14: 1/2 | 15: 1/2 | 13: 1/2 | 14: 1/2 | 15: 1/2 | | | | | |
| Augusta 10 | Do powiatu | 6 | 9 | | | | | | | | | | | | | | | |
| | z Amtu do powiatu | 12 | | | | | | | | | | | | | | | | |
| Wron 15 | do powiatu atrosow | | | | | | 67 | | | | | | 2 | | | | | |
| 22 | do powiatu Zesperandy | 11 | 3 | | | | 16 | | 115 | | 8 | | 217 | | | | | |
| Sera 01 | do Powiatu adestono | | | | | | 104 | 46 | 4 | | | | 16 | 515 | | | | |
| Wron 24 | do Powiatu adestono | 133 | | | | 2 | 282 | | | | 15 | 19 | 57 | | | | | |
| Wron 7 | do Powiatu | 6 | | | | | | | 10 | | 1 | 9 | | | | | | |
| 20 | do Powiatu | 87 | 9 | | | | 165 | | | | 12 | 10 | 54 | 9 | | | | |
| 29 | do Powiatu | 22 | 5 | | | | 64 | | | | 11 | 10 | 14 | 9 | | | | |
| Januar 29 | do Powiatu adestono | 141 | 9 | | | | 284 | | | | 14 | 16 | 65 | 10 | | | | |
| Febr 14 | do Powiatu adestono | 71 | 9 | | | | | | | | 4 | 10 | | | | | | |
| Ogółem — | | 66 | 8 | | | 2 | 907 | 7 | 46 | 4 | 115 | 66 | 3 | 1 | 9 | 22 | 9 | 515 |

Przychód y Rozchód Siana w Homy Kubowej y Henry.

| Data | | Przychód | Siano | | Kop | Pienią | |
|--------|----|--------------------------------|-------|-------|-----|--------|----|
| | | | Wozny | Wozny | | 15 | 16 |
| Julii | 21 | Zebrań siana | 80 | 10 | - | - | - |
| August | 21 | Zebrań kłosa porzuci Korzonego | - | 48 | - | - | - |
| Sept | 17 | Zebrań siana pod Jonyse | - | 30 | - | - | - |
| Sept | 31 | Z wywiesie z Doia | - | - | - | - | 15 |
| Febr | 1 | Z wywiesie | - | - | - | - | 15 |
| | | Z wywiesie | 20 | 43 | 15 | - | - |
| | | Z wywiesie | 100 | 131 | 15 | - | 30 |

Rozchód

| | | | | | | | |
|--------|----|-----------------------------|-----|-----|---|---|----|
| Dec | 20 | Dla konia Namisnika | 1 | - | - | - | - |
| | | Dla kopyta | - | 2 | - | - | - |
| Sept | | Dla żywiatow | 6 | 20 | - | - | - |
| | | Dla konia Namisnika Demiana | 3 | - | - | - | - |
| Sept | 21 | Dla żywiatow | 6 | 23 | - | - | - |
| | | Dla konia Namisnika | 2 | - | - | - | - |
| Januar | 29 | Dla żywiatow | 30 | 20 | - | - | - |
| | | Dla konia Namisnika | 3 | - | - | - | - |
| Febr | 20 | Dla żywiatow upatrebionu | 10 | 20 | - | - | 4 |
| Marcu | 31 | Dla żywiatow upatrebiono | 24 | 6 | - | - | - |
| Marcu | 15 | na porzucei Donce w sawalu | - | - | 7 | - | - |
| | | Stoniatow Popusier Latos | 65 | 88 | 7 | - | 4 |
| | 30 | upatrebiono dla kopyta | 15 | - | - | - | 20 |
| | | ogud | 100 | 131 | 7 | - | 24 |

Handwritten mark or signature in the top right corner.

5

Plan Dalszy Porchod Bydta w 1838. 8.

| Data | Miejscowość | Bydło Rogate | | | | | | | | | |
|----------------|--|--------------|----|-------|---|---|-------|--|------|--|-----|
| | | Siatownik | | | | | Lubka | | Opis | | |
| | | Bydło | | Lubka | | | | | | | |
| | | Letnie | | | | | | | | | |
| | | Siatownik | | | | | | | | | |
| | | | | | | | | | | | |
| <u>Porchod</u> | | | | | | | | | | | |
| Julii 15 | przenos stronicy do Wsi Bronowicz Janubowi Sankowiczowi w zapomodu Dono w lesie r. 5. | X | 1 | | | | | | | | 14. |
| Kaya 29 | do Wsi Sukarow na Za Mianfore paw Dawidowiczowi Dono r. 5. | X | 1 | | | | | | | | 1. |
| Wr 11 | z Wsi Lewkowi Biedni na zamian dno w lesie r. 5. | X | 1 | | | | | | | | 1. |
| | na Zamian Wosianow Dono | X | 11 | | | | | | | | 11 |
| Stro 15 | na Zamian Wosianow nastore Wety od Dono | X | 11 | | | | | | | | 4 |
| | do Bronowicz nastorne | | 2 | | | | | | | | 2 |
| gbra 1 | podto z Niewiedomey Choroby | X | | 3 | | | | | | | 1 |
| Jan 15 1838 | podto Stagle z Niewiedomey Choroby | X | | 1 | | | | | | | 1 |
| mt 8 | do Wsi Aleksiejewicz Sachuric w Ostrowicow w zapomodu dono r. 5. | X | 1 | | | | | | | | 1 |
| Mar 28 | do Symonowicz Strykowiczowi Kowale w zapomodu w lesie r. 7. | X | 1 | | | | | | | | 1 |
| | do Kowalewicz Dawida an Ducekowi w Nowo Orodtemu na gospodarze Dono w zapomodu w lesie r. 8. | X | 1 | | | | | | | | 1 |
| Apr 19 | do Bronowicz Janubowi Sankowiczowi w zapomodu Dono, pięcioletniy r. 5. | X | 1 | | | | | | | | 1 |
| | do Janubowi Sankowiczowi Słodkowi płowe r. 5. letniy w lesie r. 5. r. 5. | X | 1 | | | | | | | | 1 |
| | do Kowalewiczow w zapomodu Dono Czonego 5. letniy w lesie r. 6. | X | 1 | | | | | | | | 1 |
| | do Wsi Aleksiejewicz Semenu Cechowicowi w zapomodu Dono w lesie r. 5. r. 5. | X | 1 | | | | | | | | 1 |
| | do Janowicz Cechowiczowi Dono w zapo modu, Pyka w lesie r. 5. r. 5. | X | 1 | | | | | | | | 1 |
| | do Dotywniczow Semenu Cechowicowi w zapomodu Dono Pyka w lesie r. 6. | X | 1 | | | | | | | | 1 |
| z Siemem | | | | 38 | 5 | 2 | | | | | 45 |

Dalny Mozchod Byeta Mozalego 1888.

Dakta

Mozchod

Byeto Mozatter

| | | | | | | |
|---------|-------|----------|---|---------|---|------|
| Mozhaie | Mozha | Mozownik | | Cielita | | Dyut |
| | | Byzari | | Cielom | | |
| | | 3 | 2 | 1 | 3 | |

Letrie

Szterka

Prenos

38 6 . 2 45.

Moia 6 do Wizaucelowa w pomode

wiat Pyka Zaraty monatus 5. X

do Karpowi Cielowirow Dono
w pomode Pyka X

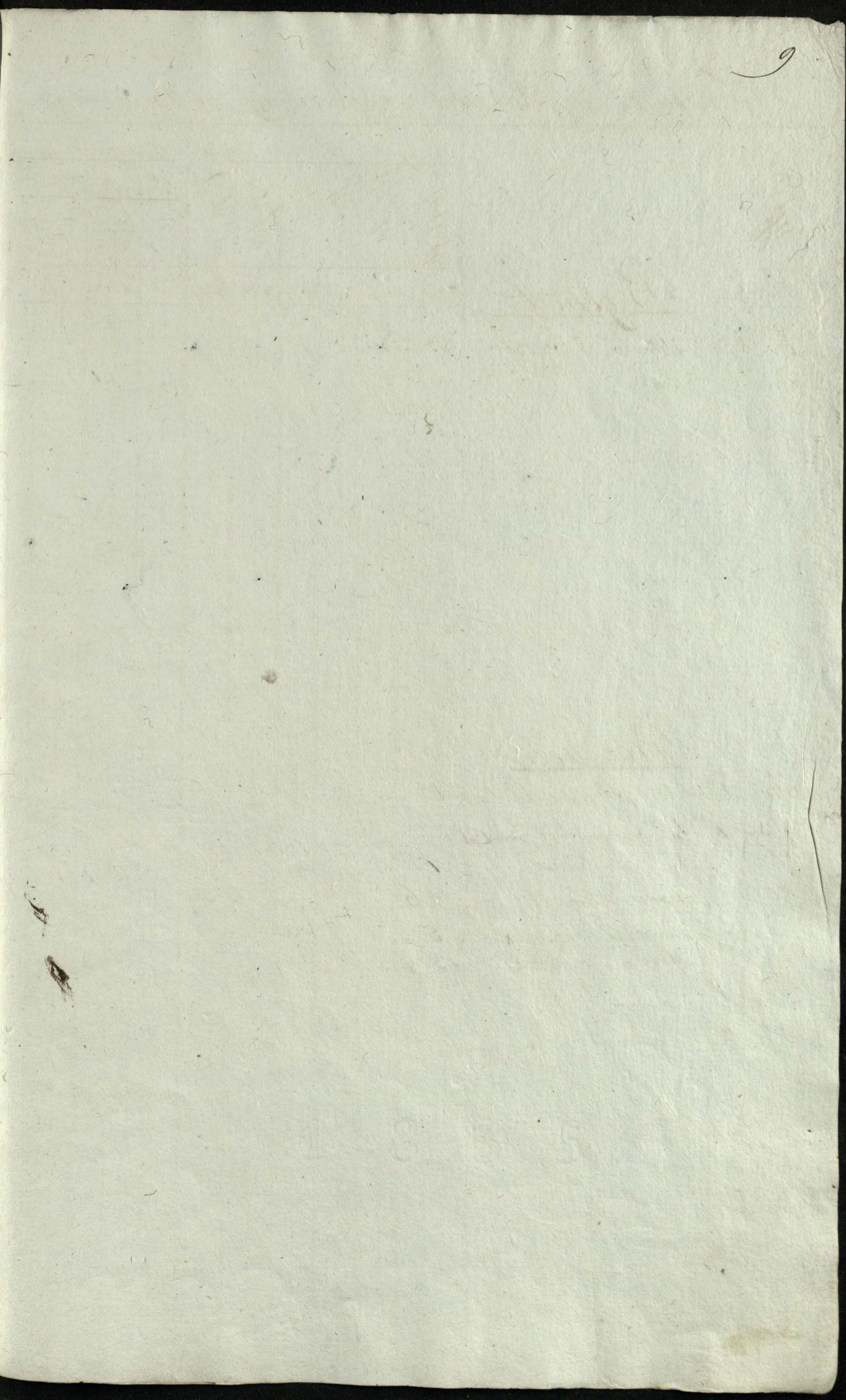
do Wsi alexsejewicz Kyrinro

w Korakau w pomode 6. X

do prokopyow Korakau w tu
pomode Dono Pyka Wlesni 6. X

20 do alexsejewicz Juwanow Cielowirow X

Mozhaie



Psychod y Prochod Ogrodowiny i Warzywa

| Data | Psychod | Ogrodowina | | | | | | Warzywa | | | | |
|---------|---------|------------|----------|----------|----------|----------|----------|----------|----------|----------|----------|-----|
| | | Kartofla | Cebula | Marchwi | Buraki | Czarna | Czerwona | Kapusta | | Buraki | | |
| | | | | | | | | biała | czarna | biała | czarna | |
| Miesiąc | Dzień | 13. / 16 | 13. / 16 | 13. / 16 | 13. / 16 | 13. / 16 | 13. / 16 | 13. / 16 | 13. / 16 | 13. / 16 | 13. / 16 | |
| Grze | 25 | 23 | 2 | | | | | | | | | |
| Grze | 1 | | | | | | | | 1 | 1 | | 4/8 |

Prochod

Grze 21 na Ordynacji Cieladzi x 1

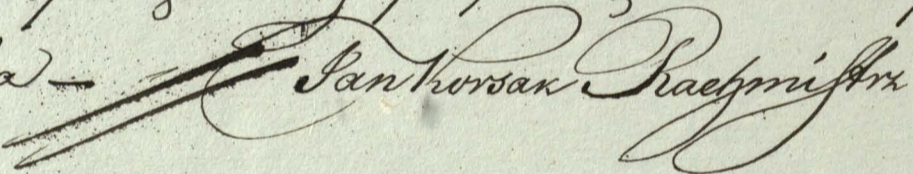
Apr 2 dla Spigalicyz, Dou. Ciel.

ludzi ugotowania x 1

porozumie Merye 1 x 26

do porozumie nalcini x 5

o z Morale spactorie 13 4

Takowe Rejistra Ekonomiczne Awulsu Sokoua
składające się z kart kanumerowanych Dkiesięciu
N^o 10. do kapirowania wszelkich Penychodow y Roz-
chodow, sprongodziwszy podpisem Dat 1837^{te} Junii
24 dnia -  Karsak Raczmiestrx