

Krajobraz litewski w fot. Jana Butkana

R. 1913.

Zeszyt VII. N647-666

121. Motyw z Otmyta, Haeiskich, w pow. miniskim  
122. " — " — " — " — " — "  
123. " — " — " — " — " — "  
124. " — " — " — " — " — "  
125. Z okolic Wilna. Leoniski.  
126. " — " — " — "  
127. " — " — Puszkarnia  
128. Tereno trocni i pałac w Latrociu.  
129. Zamek trocni.  
130. Zamek w Krewie, pow. szumiański  
131. " — " — " — "  
132. " — " — " — "  
133. Ze starego cmentarza, pow. miniski  
134. Z okolic Wilna. Leoniski  
135. " — " — Puszkarnia  
136. " — " — " — "  
137. Motyw z Otmyta Haeiskich, pow. miniski  
138. " — " — " — "  
139. " — " — " — "  
140. " — " — " — "



57819

1025



121.



122.

B Kol. N 2020



123.



124.



125.

B. Kol. W 8373



1916.



127.

B. Kott. v. 8377

*Handwritten signature or name, possibly 'W. B. Kott'.*





128.



129.

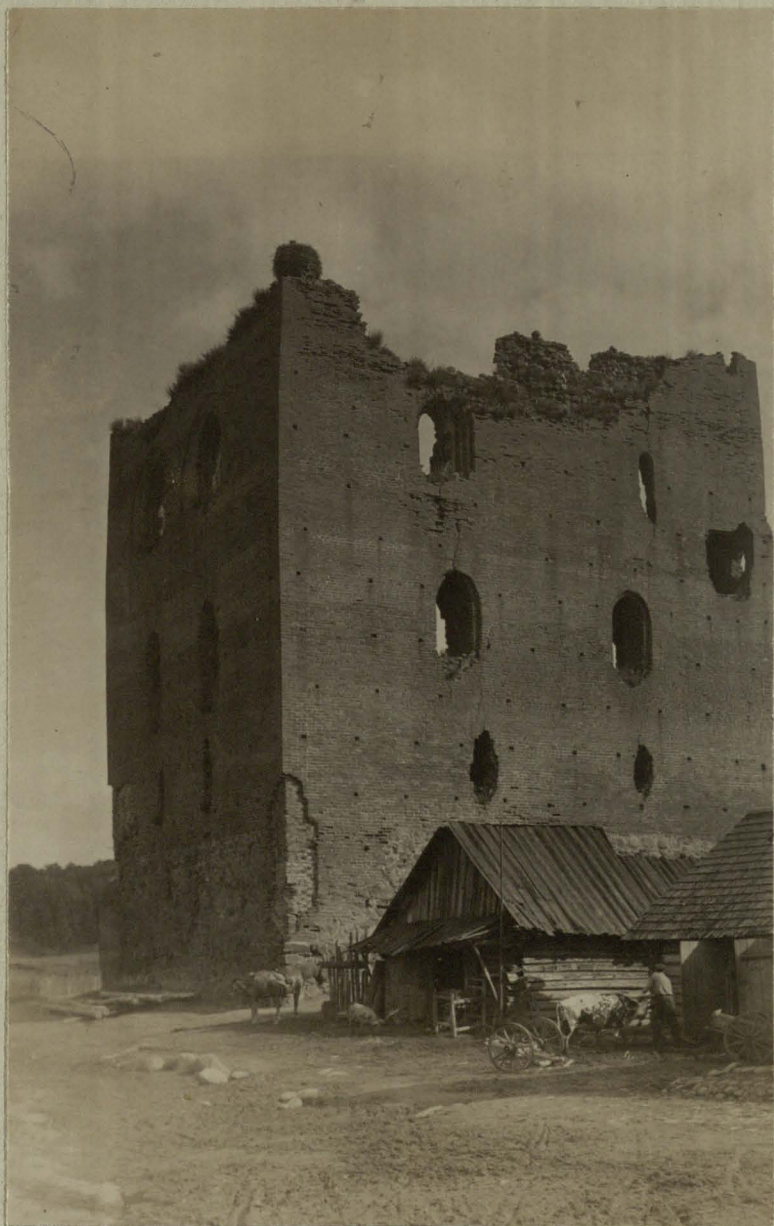
B. K. M. W 8030



130.



131.



132.

B. not. W 2534.



133.

BKM W 2023



134.



135.

B. K. W. 8379





136.

B. Kol. W 8371.



137.

Chadwick



138.



139.

B. Kd. W 2007

Handwritten signature or name, possibly "Andrew" or similar, written vertically in cursive.



140.

B. 101. W 2038