

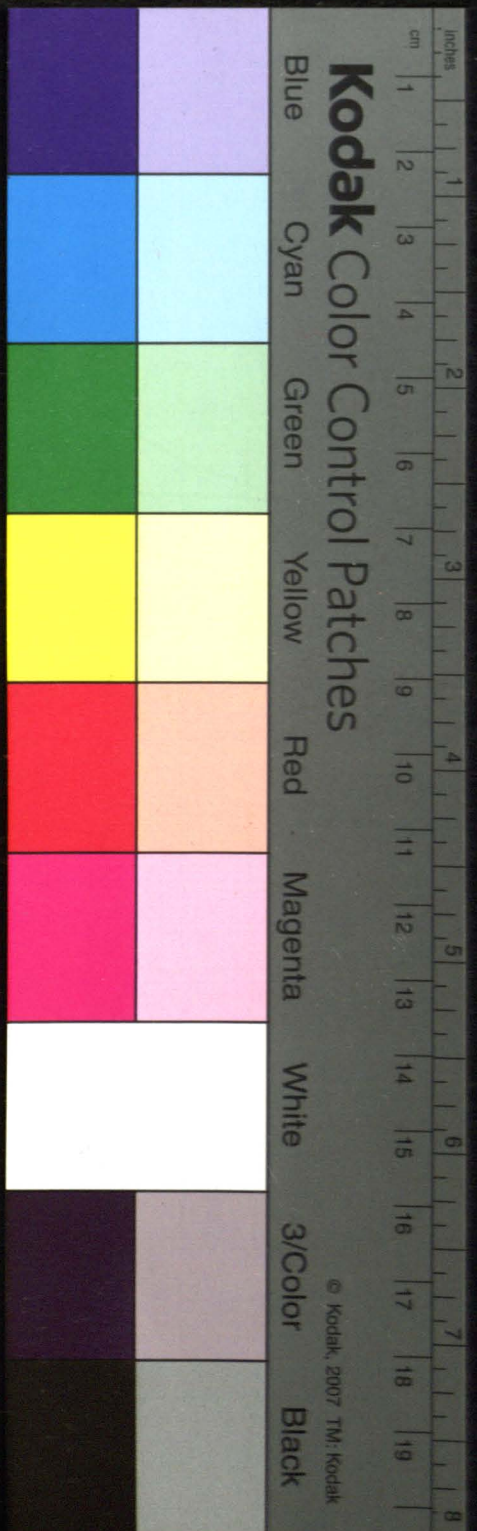
Bierczan

Do Wyboru Czynnym Socathon, Sanisij  
crax Romanentone. Materinych od Wlosian do

Solwarku Czeczonscego

naterinych in roku 1859<sup>m</sup>

W. Kwapiszowskiemu Ehrenimowi regent Solwarku Sanisij





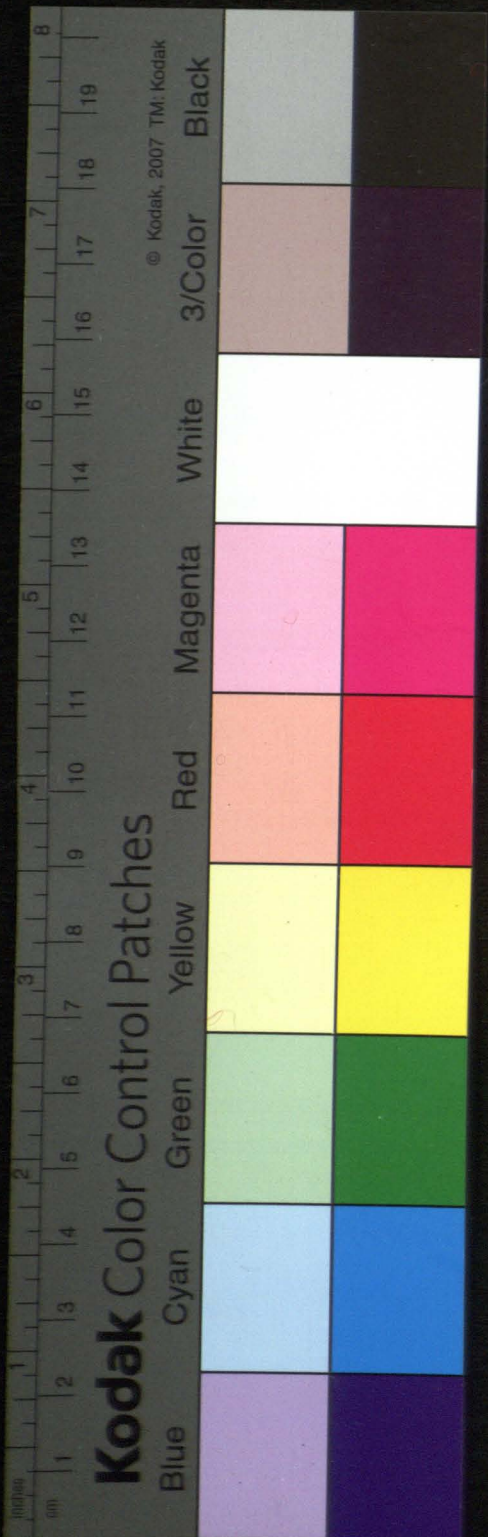
Valonese

Dec 1854  
 1858  
 1858

1	2	3	4	5	6	7	8	9	10	11	12
4 60	4 30	4 30	4 30	8 60	8 60	8 60	8 60	8 60	8 60	8 60	8 60
85 1/2	85 1/2	85 1/2	85 1/2	1 70	1 70	1 70	1 70	1 70	1 70	1 70	1 70
5	5	5	5	10	10	10	10	10	10	10	10
49 11	52 22	97 39	118 85	70 10	192 38	100 77	41 53	159 51	24 85	64 39	48 17

Wies

1. X Demito  
 1. X Sylvester  
 1. X Semen  
 1. X Anton  
 1. X Mikotay  
 1. X Wasyl  
 1. X Alexey  
 1. X Fryhor  
 1. X Semen  
 1. X Tymosh  
 1. X Fryhor  
 1. X Hasian





№ 46 0. 1

rok 1839<sup>1/2</sup> Księstwo Warszawskie 1838.  
 To są zarobki z...  
 Lipiec...  
 Pub...

Symonowicz

Panno w Kanale 3. 51. 85.

Panno w Kanale 3. 38. 85. 1.

Popus w Kanale 62. 4. 30. 85.

Andronowicz w Kanale 3. 30. 1. 5.  
 35. 85.

Czechowicz w Kanale 4. 20. 1. 70. 1.  
 Juni 22 zarobkiem Cyprian 35 15

Andronowicz w Kanale 3. 29. 85.  
 Kowalskiem przy budowlu 1839. 24

Kowalewicz 5. 1.  
 3. 60. 1. 40.  
 1. 35. 30.

Sotoweyno 2. 1. 10.  
 w Kanale 2. 5. 1. 70.  
 1840 Juni 22 zarobkiem 35 - 15

Linie na grunt przyjemny

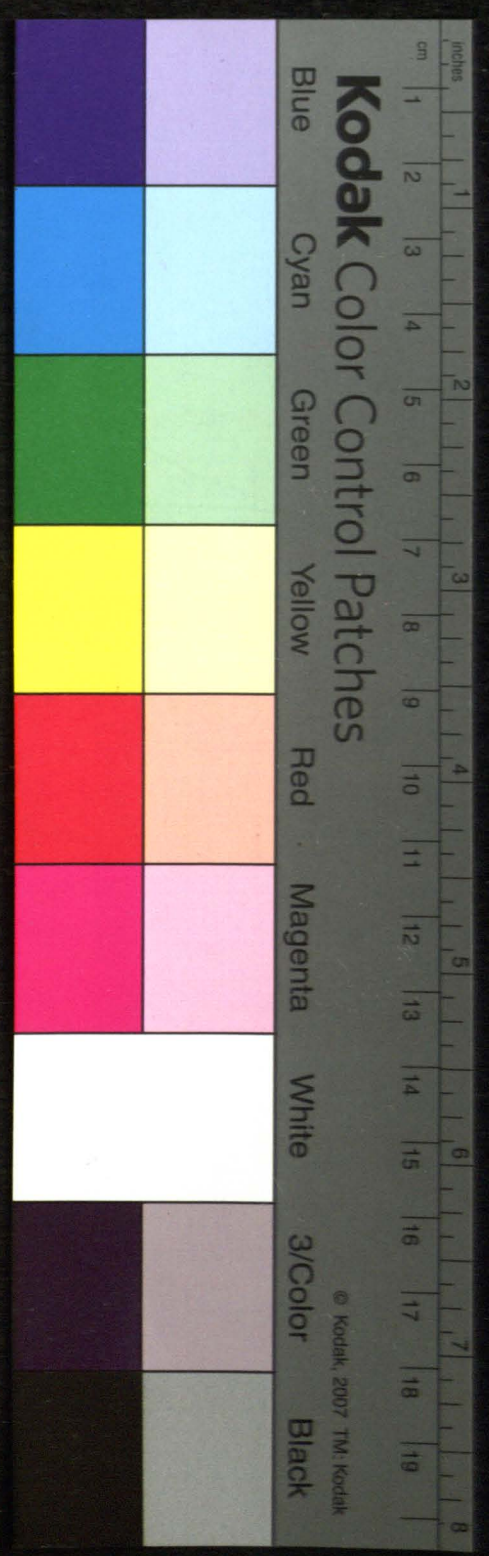
Dunnowicz w Kanale 5. 62. 85. 1.

Sotoweyno 8. 60. 1. 40. 1.  
 1. 35. 30.

Sotoweyno młody w Kanale 2. 30. 1. 70. 1.  
 1840 Juni 22 zarobkiem 35 - 15

Dudyca 4. 75. 1. 10.  
 1. 65.  
 2. 20. 1.  
 1. 35. 70.

9. 62. 60. 76. 13. 60.













List of names and dates from 1838. The page is headed "Katalanosc" and "Lutbal". It contains a grid with columns for names and dates, including "1838" and "1839".

11 y. 6 a. 1  
 This page contains a header with the date "11 y. 6 a. 1" and a grid structure similar to the left page, with columns for names and dates.

1570	51.60	10.20	6.1						
1575	4.30	85	1/2	5					
1580	8.60	170	1	10					
1585	4.30	85	1/2	5					
1590	8.60	170	1	10					
1595	4.30	85	1/2	5					
1600	8.60	170	1	10					
1605	4.30	85	1/2	5					
1610	8.60	170	1	10					
1615	4.30	85	1/2	5					
1620	8.60	170	1	10					
1625	4.30	85	1/2	5					
1630	8.60	170	1	10					
1635	4.30	85	1/2	5					
1640	8.60	170	1	10					
1645	4.30	85	1/2	5					
1650	8.60	170	1	10					
1655	4.30	85	1/2	5					
1660	8.60	170	1	10					
1665	4.30	85	1/2	5					
1670	8.60	170	1	10					
1675	4.30	85	1/2	5					
1680	8.60	170	1	10					
1685	4.30	85	1/2	5					
1690	8.60	170	1	10					
1695	4.30	85	1/2	5					
1700	8.60	170	1	10					
1705	4.30	85	1/2	5					
1710	8.60	170	1	10					
1715	4.30	85	1/2	5					
1720	8.60	170	1	10					
1725	4.30	85	1/2	5					
1730	8.60	170	1	10					
1735	4.30	85	1/2	5					
1740	8.60	170	1	10					
1745	4.30	85	1/2	5					
1750	8.60	170	1	10					
1755	4.30	85	1/2	5					
1760	8.60	170	1	10					
1765	4.30	85	1/2	5					
1770	8.60	170	1	10					
1775	4.30	85	1/2	5					
1780	8.60	170	1	10					
1785	4.30	85	1/2	5					
1790	8.60	170	1	10					
1795	4.30	85	1/2	5					
1800	8.60	170	1	10					
1805	4.30	85	1/2	5					
1810	8.60	170	1	10					
1815	4.30	85	1/2	5					
1820	8.60	170	1	10					
1825	4.30	85	1/2	5					
1830	8.60	170	1	10					
1835	4.30	85	1/2	5					
1840	8.60	170	1	10					
1845	4.30	85	1/2	5					
1850	8.60	170	1	10					
1855	4.30	85	1/2	5					
1860	8.60	170	1	10					
1865	4.30	85	1/2	5					
1870	8.60	170	1	10					
1875	4.30	85	1/2	5					
1880	8.60	170	1	10					
1885	4.30	85	1/2	5					
1890	8.60	170	1	10					
1895	4.30	85	1/2	5					
1900	8.60	170	1	10					
1905	4.30	85	1/2	5					
1910	8.60	170	1	10					
1915	4.30	85	1/2	5					
1920	8.60	170	1	10					
1925	4.30	85	1/2	5					
1930	8.60	170	1	10					
1935	4.30	85	1/2	5					
1940	8.60	170	1	10					
1945	4.30	85	1/2	5					
1950	8.60	170	1	10					
1955	4.30	85	1/2	5					
1960	8.60	170	1	10					
1965	4.30	85	1/2	5					
1970	8.60	170	1	10					
1975	4.30	85	1/2	5					
1980	8.60	170	1	10					
1985	4.30	85	1/2	5					
1990	8.60	170	1	10					
1995	4.30	85	1/2	5					
2000	8.60	170	1	10					
2005	4.30	85	1/2	5					
2010	8.60	170	1	10					
2015	4.30	85	1/2	5					
2020	8.60	170	1	10					
2025	4.30	85	1/2	5					
2030	8.60	170	1	10					
2035	4.30	85	1/2	5					
2040	8.60	170	1	10					
2045	4.30	85	1/2	5					
2050	8.60	170	1	10					
2055	4.30	85	1/2	5					
2060	8.60	170	1	10					
2065	4.30	85	1/2	5					
2070	8.60	170	1	10					
2075	4.30	85	1/2	5					
2080	8.60	170	1	10					
2085	4.30	85	1/2	5					
2090	8.60	170	1	10					
2095	4.30	85	1/2	5					
2100	8.60	170	1	10					
2105	4.30	85	1/2	5					
2110	8.60	170	1	10					
2115	4.30	85	1/2	5					
2120	8.60	170	1	10					
2125	4.30	85	1/2	5					
2130	8.60	170	1	10					
2135	4.30	85	1/2	5					
2140	8.60	170	1	10					
2145	4.30	85	1/2	5					
2150	8.60	170	1	10					
2155	4.30	85	1/2	5					
2160	8.60	170	1	10					
2165	4.30	85	1/2	5					
2170	8.60	170	1	10					
2175	4.30	85	1/2	5					
2180	8.60	170	1	10					
2185	4.30	85	1/2	5					
2190	8.60	170	1	10					
2195	4.30	85	1/2	5					
2200	8.60	170	1	10					
2205	4.30	85	1/2	5					
2210	8.60	170	1	10					
2215	4.30	85	1/2	5					
2220	8.60	170	1	10					
2225	4.30	85	1/2	5					
2230	8.60	170	1	10					
2235	4.30	85	1/2	5					
2240	8.60	170	1	10					
2245	4.30	85	1/2	5					
2250	8.60	170	1	10					
2255	4.30	85	1/2	5					
2260	8.60	170	1	10					
2265	4.30	85	1/2	5					
2270	8.60	170	1	10					
2275	4.30	85	1/2	5					
2280	8.60	170	1	10					
2285	4.30	85	1/2	5					
2290	8.60	170	1	10					
2295	4.30	85	1/2	5					
2300	8.60	170	1	10					
2305	4.30	85	1/2	5					
2310	8.60	170	1	10					
2315	4.30	85	1/2	5					
2320	8.60	170	1	10					
2325	4.30	85	1/2	5					
2330	8.60	170	1	10					
2335	4.30	85	1/2	5					
2340	8.60	170	1	10					
2345	4.30	85	1/2	5					
2350	8.60	170	1	10					
2355	4.30	85	1/2	5					
2360	8.60	170	1	10					
2365	4.30	85	1/2	5					



Lieta: *Natalenose* *Lieta*  
 1838<sup>o</sup> *1838<sup>o</sup>*  
 1838<sup>o</sup> *1838<sup>o</sup>*

*1838<sup>o</sup>* *1838<sup>o</sup>*  
*1838<sup>o</sup>* *1838<sup>o</sup>*

30. 137 60 27 12. 15. 2. 35.  
 75. 4. 30 85 7 5.  
 1. 50 8 60 1. 70 1. 10  
 1. 50 8 60 1. 70 1. 10.  
 4 50  
 1. 50 8 60 1. 70 1. 10  
 1. 50 8 60 1. 70 1. 10.  
 1. 50 8 60 1. 70 1. 10.  
 75. 4 30 85 7 5.  
 75 4 30 85 7 5.  
 1. 50 8 60 1. 70 1. 10.  
 1. 50 8 60 1. 70 1. 10.  
 1. 50 8 60 1. 70 1. 10.  
 1. 50 8 60 1. 70 1. 10

*1801 97* 9 13.  
 48. 84 1/2  
 90 36 1/2  
 54. 72 1/2  
 80 48 1/2  
 78. 124  
 55.  
 70 44  
 89. 60  
 44. 45  
 66. 91  
 1820  
 1826 47 1/2 18. 16.

*1801 97*  
 X *Semen*  
 X *Symon*  
 X *Nikolaj*  
 X *Wasył*  
 X *Stepan*  
 X *Pilip*  
 X *Omelian*  
 X *Chudor*  
 X *Nikifor*  
 X *Dawidowicz*  
 X *Dawidowicz*  
 X *Dawidowicz*  
 X *Dawidowicz*  
 X *Staw*  
*Latus*

*na Strony*  
*Pawlowicz*  
*Dunkowicz*  
*Suprunowicz*  
*Sonki za grant przyimny*  
*Myrieowicz*  
*Mogiel*  
*Kairan*  
*Dawidowicz*  
*Suprunowicz*  
*Dawidowicz*  
*Czechowicz*  
*Dawidowicz*  
*Czechowicz*  
*Dawidowicz*  
*Czechowicz*

22 82 99 16 21 10  
 2. 85  
 7. 1 50  
 1. 60 20  
 4. 50 8. 60 1. 10  
 75. 4. 30 85 1  
 3. 1. 70 1. 10  
 1. 50 1. 50  
 2. 92  
 1. 50  
 2. 50  
 4. 30 90  
 1. 50 1. 50  
 5. 1  
 1. 50 1. 60 1. 70  
 70. 8. 60 1. 70 1.  
 1. 50 8. 60 1. 70 1. 10  
 3. 60 1. 1  
 4. 1  
 1. 50 1. 30  
 36 46 184 8 36 2

78 12  
 84 57









Liść *Polakowski* *Liść*

*Wzrost*

1837		1838		1839	
Jan	Feb	Jan	Feb	Jan	Feb
...	...	...	...	...	...

1837		1838		1839	
Jan	Feb	Jan	Feb	Jan	Feb
...	...	...	...	...	...

4.50	25.80	5.10	3.	30.	90	2.2.	<i>Aprenius</i>
75.	4.30	85.	1/2	5.	62.30	1.1	<i>Swan</i>
1.50	8.60	1.70	1.	10.	164.1	1.1	<i>Sonow</i>
75.	4.50	85.	1/2	5.	70.	1.1	<i>Miotay</i>
75.	4.30	85.	1/2	5.	225.58	1.1	<i>Sachway Swan</i>
1.50	8.60	85.	1.	10.	60.63	1.1	<i>Andrey</i>
75.	4.30	1.70	1/2	5.	114.70	1.1	<i>Prokop</i>
75.	4.30	85.	1/2	5.	54.46	1.1	<i>Stepan</i>
1.50	8.60	1.70	1.	10.	163.78	1.1	<i>Sanko</i>
1.50	8.60	1.70	1.	10.	82.42	1.1	<i>Petrus</i>
75.	4.50	85.	1/2	5.	38.18	1.1	<i>Swan</i>
75.	4.50	85.	1/2	5.	167.56	1.1	<i>Chwedor</i>

<i>nia Strong</i>	7.50	21.50	2.60
<i>Not</i>	2.58		5.
<i>Dachun</i>	2.93		1.
<i>Nowalawick</i>	4.30	10.	5.
<i>Czechowick</i>			1.
<i>Andronowick</i>	8.	1.	10.
<i>Czechowick</i>	4.	1.	
<i>Bordnick</i>	1.00	8.	
<i>Roxan</i>			1.
<i>Roxan</i>	4.	1.	10.
<i>Czechowick</i>	3.48		5.
<i>Roxan</i>			1.

12	6154	828
----	------	-----

15.75 92.10 17.85 70 1.45 1225 7 6.9 *Satus*

