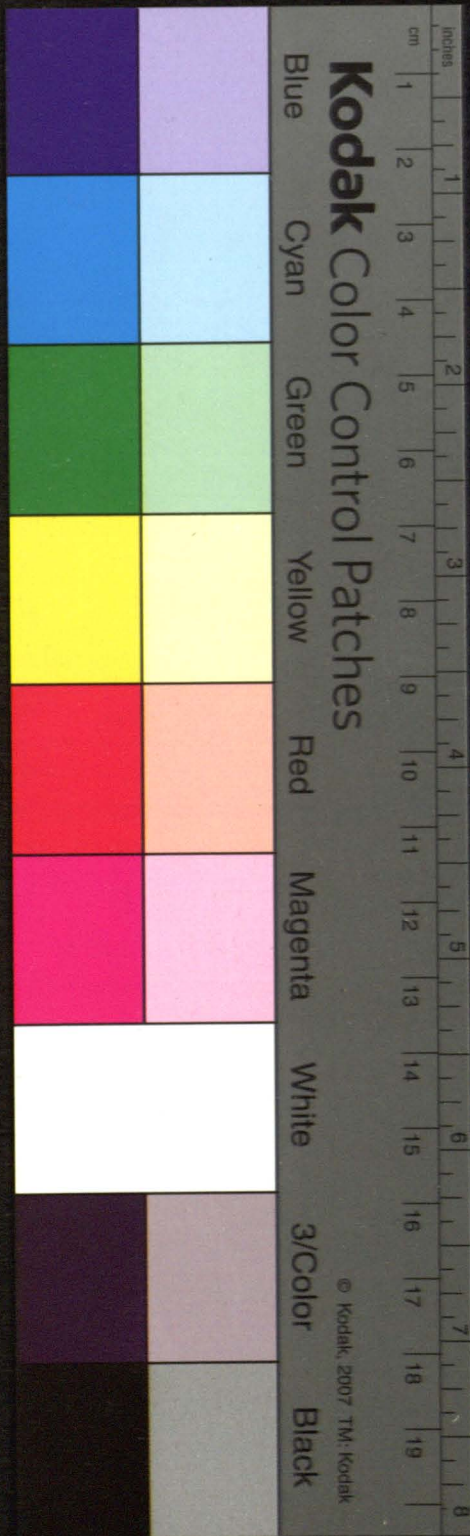


Jan 21 1680 ...

Main body of handwritten text in an old script, possibly Latin or a related language, with some lines numbered 1, 2, and 4 on the left margin.

31 mada 1680 ...



2 Ja 10 No 11

Handwritten text in a cursive script, likely a letter or document header, starting with "G...".

Handwritten text in a cursive script, continuing the document's content.

Handwritten text in a cursive script, possibly a signature or a specific section header.

Handwritten text in a cursive script, forming the main body of the document.

Handwritten text in a cursive script, including a signature and a date at the bottom of the page.

